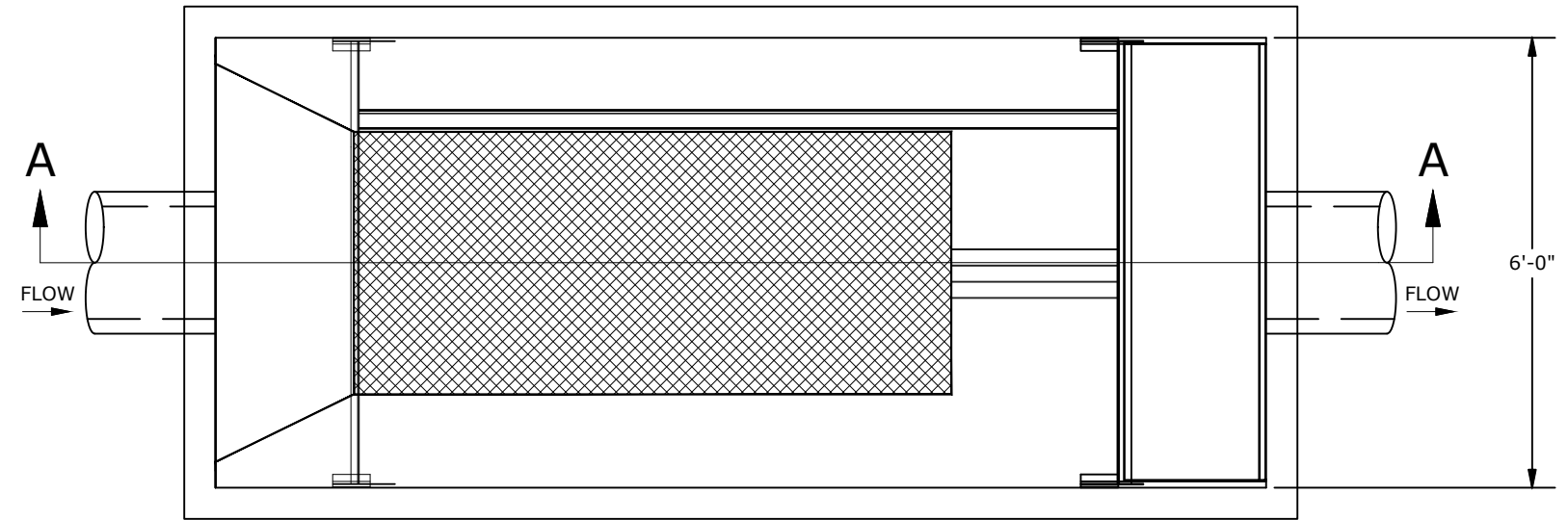
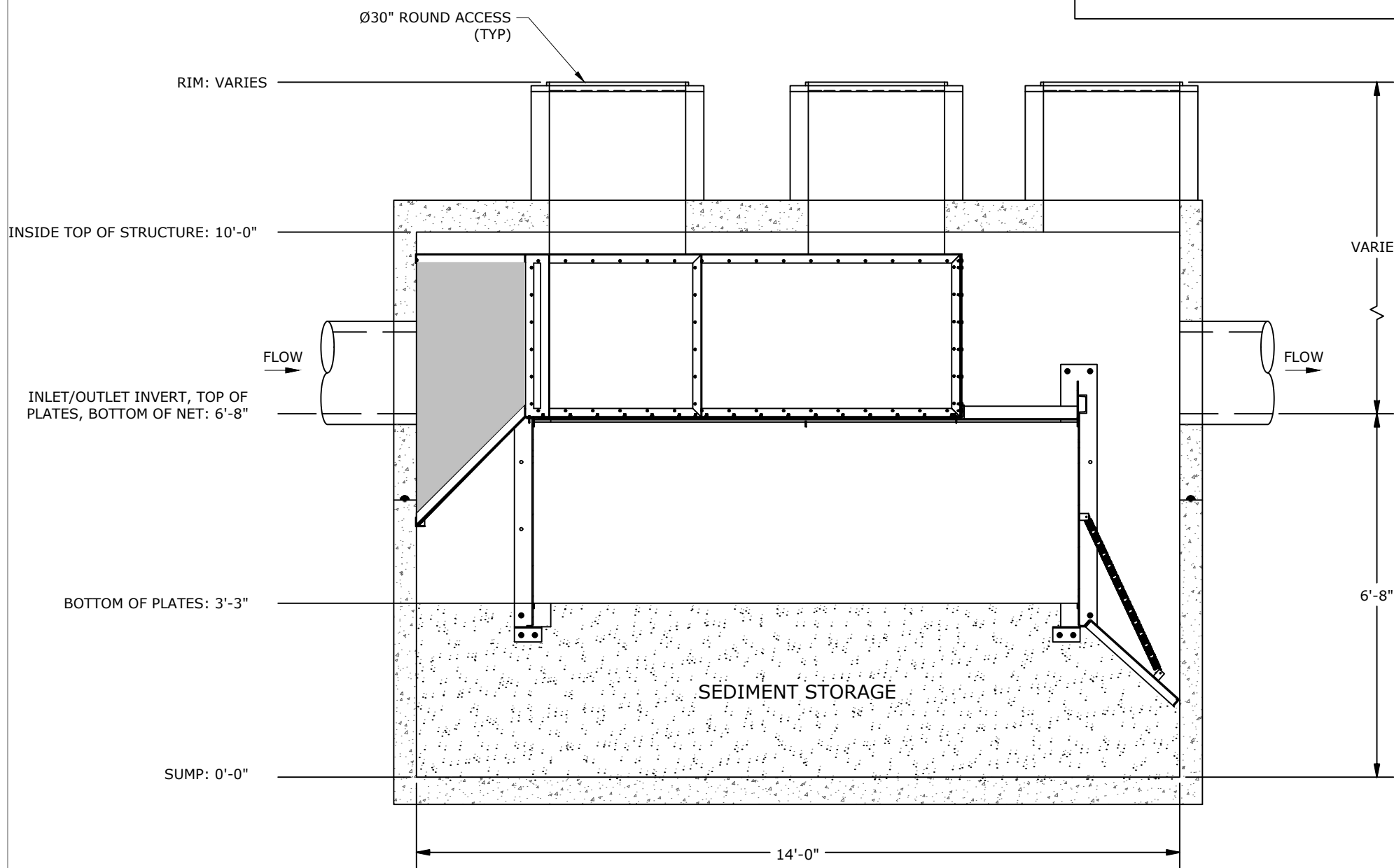


SITE SPECIFIC DATA			
STRUCTURE ID			
WATER QUALITY FLOW RATE (CFS)			
PEAK FLOW RATE (CFS)			
SEDIMENT STORAGE CAPACITY (CF)			
FLOATABLES STORAGE CAPACITY (CF)			
BASKET OPENING SIZE			
RIM ELEVATION			
PIPE DATA	I.E.	MATERIAL	DIAMETER
INLET PIPE			
OUTLET PIPE			



PLAN VIEW
N.T.S.



SECTION A-A
N.T.S.

DESIGN NOTES:

1. DESIGN LOADING:
 - a. LOAD RATING = AASHTO HS-20
 - b. MINIMUM COVER = 0.50', MAXIMUM COVER = 8.00'. CONTACT STORMTRAP FOR ADDITIONAL COVER OPTIONS.
 - c. WATER TABLE AT OR BELOW OUTLET PIPE INVERT ELEVATION.
 - d. NO LATERAL SURCHARGE FROM ADJACENT STRUCTURES SUCH AS VEGETATION, BUILDINGS, WALLS, OR FOUNDATIONS.
2. ENGINEER OF RECORD TO CONFIRM THE DESIGN LOADINGS MEET PROJECT REQUIREMENTS. CONTACT STORMTRAP FOR ALTERNATIVE DESIGN LOAD OPTIONS.

GENERAL NOTES:

1. FOR SITE SPECIFIC DRAWINGS WITH DETAILED STRUCTURE DIMENSIONS, WEIGHTS, AND ACCESSORIES, PLEASE CONTACT YOUR STORMTRAP REPRESENTATIVE.
2. CONCRETE COMPONENTS SHALL BE MANUFACTURED IN ACCORDANCE WITH ASTM C857 & ACI318.
3. CONTRACTOR TO INSTALL THE STRUCTURE IN ACCORDANCE WITH ASTM C891.
4. CONTRACTOR TO PROVIDE ALL LABOR AND EQUIPMENT REQUIRED TO OFFLOAD AND INSTALL UNIT.
5. CONTRACTOR TO PROVIDE AND INSTALL ALL PIPES, FRAMES, COVERS, HATCHES, AND RISERS UNLESS SPECIFIED OTHERWISE.
6. CONTRACTOR TO ADD JOINT SEALANT (PROVIDED BY STORMTRAP) BETWEEN ALL STRUCTURE SECTIONS.
7. PREFERRED OPENING SIZE 30" OR LESS AND ORIENTATED AS SHOWN. ANY OPENING NEEDED THAT DOES NOT FIT THIS CRITERIA SHALL BE BROUGHT TO THE ATTENTION OF STORMTRAP FOR REVIEW.
8. STANDARD BASKET SIZE IS 36" X 42" X 96". FOR ALTERNATIVE BASKET SIZES PLEASE CONTACT YOUR STORMTRAP REPRESENTATIVE.

DRAWINGS ARE FOR REFERENCE ONLY AND SHALL NOT BE USED FOR CONSTRUCTION PURPOSES.

SiteSaver®

SITESAVER 4 BASKET STANDARD DETAIL

DRAWN BY:	DATE:	SCALE:	
		NTS	V1

StormTrap®

PATENTS LISTED AT: [HTTP://STORMTRAP.COM/PATENT]

1287 WINDHAM PARKWAY
ROMEIOVILLE, IL 60446
P:815-941-4549
F:331-318-5347

SHEET 1 OF 1