

# StormTrap®

MODULAR CONCRETE  
STORMWATER MANAGEMENT

CONTACT STORMTRAP TO REQUEST A DESIGN AND BUDGET FOR YOUR SPECIFIC PROJECT NEEDS.

| SHEET INDEX |                                       |
|-------------|---------------------------------------|
| PAGE        | DESCRIPTION                           |
| 0.0         | COVER SHEET                           |
| 1.0         | GENERAL NOTES                         |
| 1.1         | DOUBLETRAP DESIGN CRITERIA            |
| 2.0         | DOUBLETRAP SYSTEM LAYOUT              |
| 3.0         | DOUBLETRAP INSTALLATION SPECIFICATION |
| 3.1         | DOUBLETRAP INSTALLATION SPECIFICATION |
| 4.0         | DOUBLETRAP BACKFILL SPECIFICATION     |
| 5.0         | PIPE / ACCESS OPENING SPECIFICATION   |
| 6.0         | DOUBLETRAP MODULE TYPES               |

### STORMTRAP CONTACT INFORMATION

STORMTRAP SUPPLIER: STORMTRAP  
CONTACT NAME: STORMTRAP  
CELL PHONE: STORMTRAP  
SALES EMAIL: STORMTRAP

## StormTrap®

PATENTS LISTED AT: [HTTP://STORMTRAP.COM/PATENT/](http://stormtrap.com/patent/)

1287 WINDHAM PARKWAY  
ROMEVILLE, IL 60446  
P:815-941-4549 / F:331-318-5347

### ENGINEER INFORMATION:

### PROJECT INFORMATION:

DOUBLETRAP  
INFILTRATION

### CURRENT ISSUE DATE:

### ISSUED FOR:

SAMPLE PROJECT

| REV. | DATE: | ISSUED FOR: | DWN BY: |
|------|-------|-------------|---------|
|      |       |             |         |
|      |       |             |         |
|      |       |             |         |
|      |       |             |         |
|      |       |             |         |
|      |       |             |         |
|      |       |             |         |
|      |       |             |         |

### SCALE:

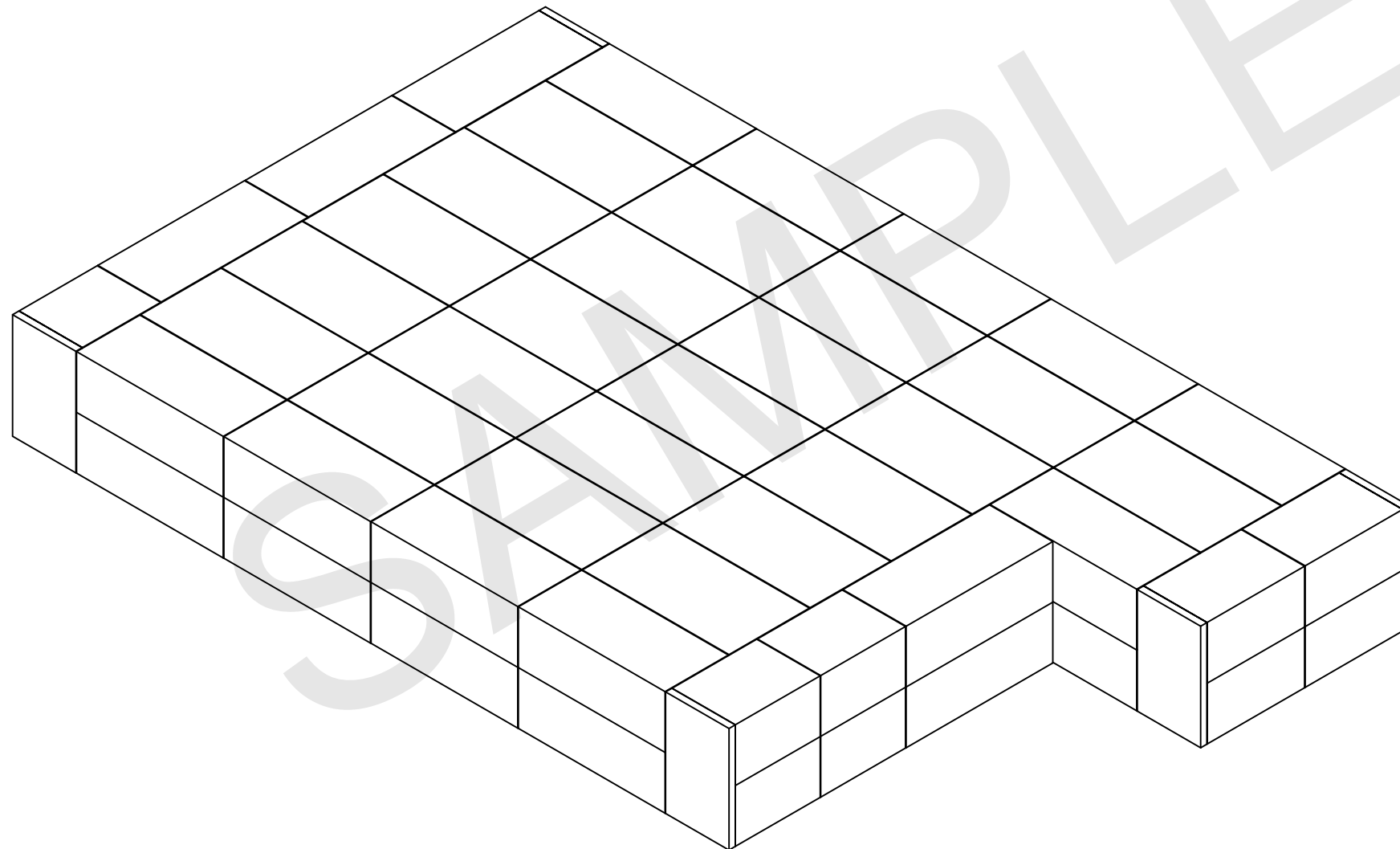
NTS

### SHEET TITLE:

COVER SHEET

### SHEET NUMBER:

0.0



## DOUBLETRAP - INFILTRATION SAMPLE DRAWING

GENERAL NOTES:

1. STRUCTURE PROXIMITY LOADING DISCLAIMER:

STORMTRAP MODULES AND FOUNDATION ARE NOT DESIGNED TO ACCEPT ANY ADDITIONAL LOADING FROM ANY NEARBY STRUCTURES NEXT TO OR OVER THE TOP OF STORMTRAP. EXAMPLES OF NEARBY STRUCTURES MAY INCLUDE BUT ARE NOT LIMITED TO BUILDINGS, FOUNDATION ELEMENTS, RETAINING WALLS, LIGHT POLES, BOLLARDS, SIGNPOSTS, FENCES. ADDITIONALLY, STORMTRAP IS NOT RESPONSIBLE FOR INSTALLATION CONFLICTS ARISING FROM ANY OF THESE NEARBY STRUCTURES. IF ADDITIONAL LOADING CONSIDERATIONS ARE REQUIRED FOR STRUCTURAL DESIGN OF STORMTRAP, PLEASE CONTACT STORMTRAP IMMEDIATELY. FOR LIGHT POLES SHOWN OVER THE TOP OF THE SYSTEM, STORMTRAP WILL PROVIDE A 5'-0" LATERAL DISTANCE CAVITY AROUND THE LIGHT POLE TO ACCOMMODATE IT. THE EOR TO TAKE RESPONSIBILITY FOR ENSURING THE LIGHT POLE IS NOT INFLECTING ANY LOADING ON THE STORMTRAP MODULES AND FOUNDATION.

2. TREE LOADING DISCLAIMER:

THE NUMBER OF TREES OR WEIGHT OF TOTAL PLANT MATERIAL PRESENT ON TOP OF A SINGLE STORMTRAP MODULE SHALL NOT EXCEED 16,000 LBS. THE REQUIREMENTS LISTED HERE APPLY AT BOTH THE TIME OF INSTALLATION AND FOR THE LIFE OF THE TREES AND PLANTS IN QUESTION. THE EOR AND LANDSCAPE ARCHITECT ARE RESPONSIBLE FOR ENSURING THAT TREE AND OTHER PLANT ROOTS DO NOT INTERFERE WITH OR COMPROMISE THE FUNCTIONAL AND STRUCTURAL INTEGRITY OF STORMTRAP'S UNDERGROUND MODULES. APPROPRIATE MEASURES SHOULD BE TAKEN TO PREVENT ROOT GROWTH INTO THE STORMTRAP SYSTEM FROM ADJACENT OR OVERHEAD TREES. FURTHERMORE, THE ROOTS OF THE TREES MUST BE CONTAINED TO PREVENT FUTURE DAMAGE TO THE STORMTRAP SYSTEM. STORMTRAP ACCEPTS NO LIABILITY FOR DAMAGES CAUSED BY TREES OR OTHER VEGETATION PLACED AROUND OR ON TOP OF THE SYSTEM.

3. PRE-TREATMENT/SEDIMENT/FILTER CHAMBER DISCLAIMER:

FOR SYSTEMS CONTAINING PRE-TREATMENT, SEDIMENTATION AND/OR FILTER CHAMBERS; IF REQUIRED TO BE SEALED TO PREVENT SAND AND/OR PRE-TREATED WATER FROM MIGRATING INTO ADJOINING MODULES, IT IS THE SOLE RESPONSIBILITY OF THE INSTALLING CONTRACTOR TO ENSURE THAT THOSE MODULES ARE SEALED.

4. OUTLET CONTROL STRUCTURE DISCLAIMER (IF SHOWN ON THESE PLANS):

IF A WATERTIGHT SOLUTION IS REQUIRED FOR AN OUTLET CONTROL STRUCTURE, ALL EXTERIOR COLD JOINTS, INCLUDING JOINT BETWEEN TOP AND BASE MODULES, BETWEEN TOP AND BASE OF ADJOINING SYMONS WALLS, AND JOINTS BETWEEN MODULE AND ADJACENT END PANELS WILL BE THE SOLE RESPONSIBILITY OF THE INSTALLING CONTRACTOR TO PROVIDE AND INSTALL THE WATERTIGHT APPLICATION PER THE EOR'S SPECIFICATION.

SAMPLE



PATENTS LISTED AT: [HTTP://STORMTRAP.COM/PATENT]

1287 WINDHAM PARKWAY  
ROMEONVILLE, IL 60446  
P:815-941-4549 / F:331-318-5347

ENGINEER INFORMATION:

[Empty box for Engineer Information]

PROJECT INFORMATION:

DOUBLETRAP  
INFILTRATION

CURRENT ISSUE DATE:

[Empty box for Current Issue Date]

ISSUED FOR:

SAMPLE PROJECT

| REV. | DATE: | ISSUED FOR: | DWN BY: |
|------|-------|-------------|---------|
|      |       |             |         |
|      |       |             |         |
|      |       |             |         |
|      |       |             |         |
|      |       |             |         |
|      |       |             |         |
|      |       |             |         |

SCALE:

NTS

SHEET TITLE:

GENERAL NOTES

SHEET NUMBER:

1.0

| STORMTRAP SYSTEM INFORMATION |                     |
|------------------------------|---------------------|
| UNIT HEADROOM:               | 10'-0" DOUBLETRAP   |
| TOTAL STORAGE PROV:          | 40974.28 CUBIC FEET |

**SITE SPECIFIC DESIGN CRITERIA**

1. STORMTRAP UNITS SHALL BE MANUFACTURED AND INSTALLED ACCORDING TO SHOP DRAWINGS APPROVED BY THE INSTALLING CONTRACTOR AND ENGINEER OF RECORD. THE SHOP DRAWINGS SHALL INDICATE SIZE AND LOCATION OF ROOF OPENINGS AND INLET/OUTLET PIPE TYPES, SIZES, INVERT ELEVATIONS AND SIZE OF OPENINGS.
2. COVER RANGE: MIN. 1.08' MAX. 10.00' CONSULT STORMTRAP FOR ADDITIONAL COVER OPTIONS.
3. ALL DIMENSIONS AND SOIL CONDITIONS, INCLUDING BUT NOT LIMITED TO GROUNDWATER AND SOIL BEARING CAPACITY ARE REQUIRED TO BE VERIFIED IN THE FIELD BY OTHERS PRIOR TO STORMTRAP INSTALLATION.

**StormTrap**  
 PATENTS LISTED AT: [HTTP://STORMTRAP.COM/PATENT]  
 1287 WINDHAM PARKWAY  
 ROMEVILLE, IL 60446  
 P:815-941-4549 / F:331-318-5347

**ENGINEER INFORMATION:**

**PROJECT INFORMATION:**

DOUBLETRAP  
INFILTRATION

**CURRENT ISSUE DATE:**

**ISSUED FOR:**

SAMPLE PROJECT

| REV. | DATE: | ISSUED FOR: | DWN BY: |
|------|-------|-------------|---------|
|      |       |             |         |
|      |       |             |         |
|      |       |             |         |
|      |       |             |         |
|      |       |             |         |
|      |       |             |         |
|      |       |             |         |
|      |       |             |         |
|      |       |             |         |
|      |       |             |         |

**SCALE:**

NTS

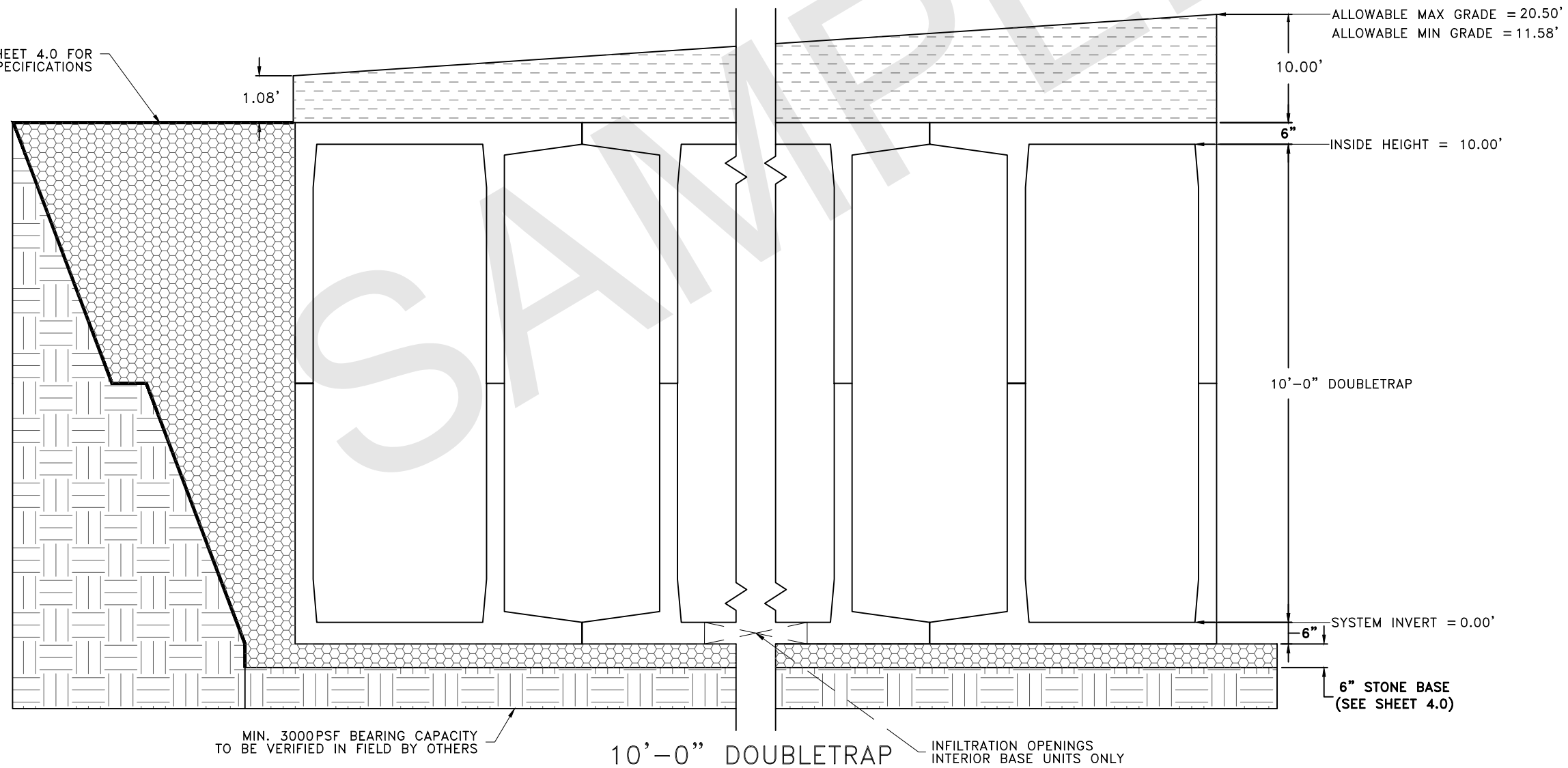
**SHEET TITLE:**

DOUBLETRAP  
DESIGN  
CRITERIA

**SHEET NUMBER:**

1.1

SEE SHEET 4.0 FOR  
BACKFILL SPECIFICATIONS



| BILL OF MATERIALS |            |                   |            |             |
|-------------------|------------|-------------------|------------|-------------|
| QTY.              | UNIT TYPE  | DESCRIPTION       | TOP WEIGHT | BASE WEIGHT |
| 42                | I          | 10'-0" DOUBLETRAP |            |             |
| 0                 | II         | 10'-0" DOUBLETRAP |            |             |
| 28                | III        | 10'-0" DOUBLETRAP |            |             |
| 10                | SPIV       | 10'-0" DOUBLETRAP |            |             |
| 5                 | T4 PANEL   | 8" THICK PANEL    |            |             |
| 9                 | JOINT WRAP | 150' PER ROLL     |            |             |
| 40                | JOINT TAPE | 14.5' PER ROLL    |            |             |
| TOTAL PIECES = 80 |            |                   |            |             |
| TOTAL PANELS = 5  |            |                   |            |             |

**DESIGN CRITERIA**

ALLOWABLE MAX GRADE = 20.50'  
 ALLOWABLE MIN GRADE = 11.58'  
 INSIDE HEIGHT ELEVATION = 10.00'  
 SYSTEM INVERT = 0.00'

**NOTES:**

1. DIMENSIONING OF STORMTRAP SYSTEM SHOWN BELOW ALLOW FOR A 3/4" GAP BETWEEN EACH MODULE.
2. ALL DIMENSIONS TO BE VERIFIED IN THE FIELD BY OTHERS.
3. SEE SHEET 3.0 FOR INSTALLATION SPECIFICATIONS.
4. CONTRACTORS RESPONSIBILITY TO ENSURE CONSISTENCY/ACCURACY TO FINAL ENGINEER OF RECORD PLAN SET.
5. IN ORDER FOR STORMTRAP TO GENERATE APPROVAL DRAWINGS, CIVIL ENGINEERING DRAWINGS MUST BE PROVIDED TO STORMTRAP AND SHALL INCLUDE ALL PIPE SIZES, PIPE MATERIAL, PIPE INVERT ELEVATIONS, ACCESS OPENING SIZE AND SHAPE. IN ADDITION, FINAL GRADING PLANS SHALL ALSO INCLUDE MINIMUM AND MAXIMUM GRADES OVER THE TOP OF THE STORMTRAP SYSTEM.

**StormTrap**  
 PATENTS LISTED AT: [HTTP://STORMTRAP.COM/PATENT/](http://stormtrap.com/patent/)  
 1287 WINDHAM PARKWAY  
 ROMEVILLE, IL 60446  
 P:815-941-4549 / F:331-318-5347

**ENGINEER INFORMATION:**

**PROJECT INFORMATION:**

DOUBLETRAP  
INFILTRATION

**CURRENT ISSUE DATE:**

**ISSUED FOR:**

SAMPLE PROJECT

| REV. | DATE: | ISSUED FOR: | DWN BY: |
|------|-------|-------------|---------|
|      |       |             |         |
|      |       |             |         |
|      |       |             |         |
|      |       |             |         |
|      |       |             |         |
|      |       |             |         |
|      |       |             |         |
|      |       |             |         |
|      |       |             |         |

**SCALE:**

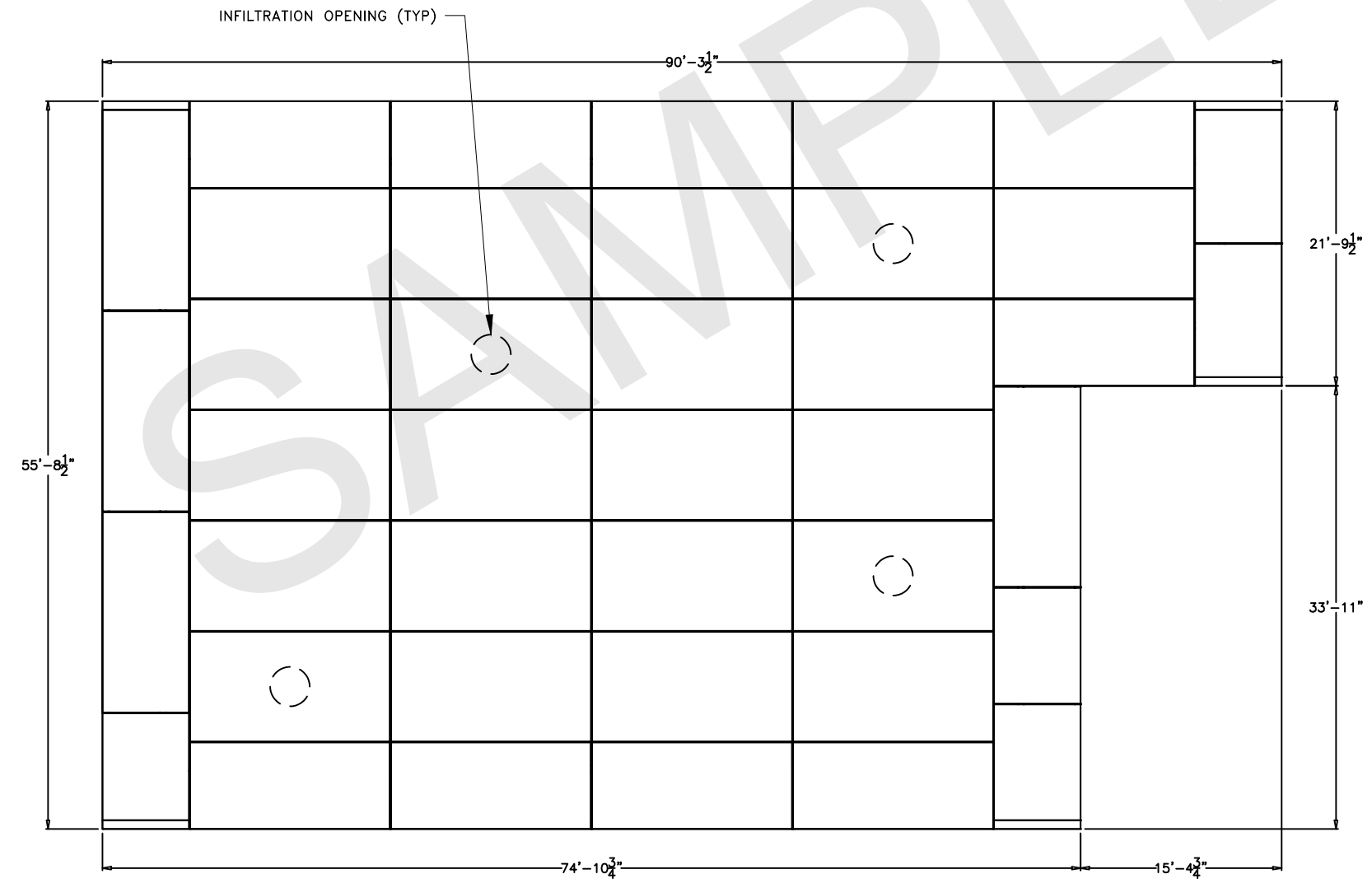
NTS

**SHEET TITLE:**

DOUBLETRAP  
SYSTEM LAYOUT

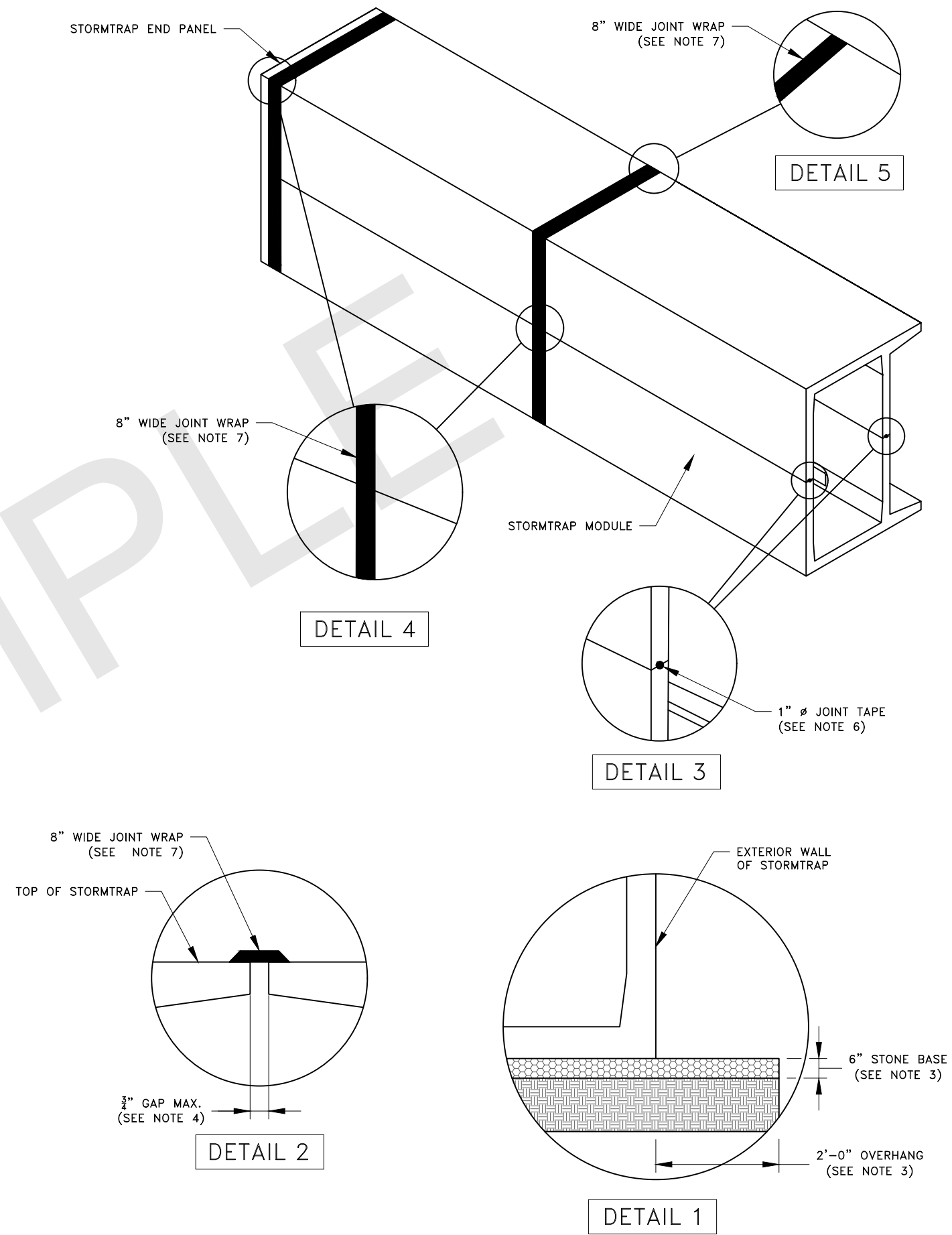
**SHEET NUMBER:**

2.0



# STORMTRAP INSTALLATION SPECIFICATION

- STORMTRAP SHALL BE INSTALLED IN ACCORDANCE WITH ASTM C891 (STANDARD PRACTICE FOR INSTALLATION OF UNDERGROUND PRECAST CONCRETE UTILITY STRUCTURES). THE FOLLOWING ADDITIONS AND/OR EXCEPTIONS ARE PROVIDED FOR EMPHASIS. THE MENTION OF THESE ITEMS DOES NOT PRECLUDE THE INSTALLING CONTRACTOR FROM FOLLOWING ASTM C891 IN ITS ENTIRETY AND IMPLEMENTING ALL APPROPRIATE MEASURES. THE INSTALLING CONTRACTOR OWNS AND IS RESPONSIBLE FOR THE STORMTRAP SYSTEM UPON REMOVAL OF THE MODULES FROM THE DELIVERY TRUCK THROUGH 'FINAL CONSTRUCTION'. FINAL CONSTRUCTION IS ACHIEVED WHEN ALL MODULES ARE SET, FULLY BACKFILLED, AND WHEN FINAL FINISHED GRADES ARE REACHED. THE CONTRACTOR IS RESPONSIBLE FOR ANY COUNTERMEASURES NECESSARY TO RESIST UPLIFT/BUOYANCY BEFORE 'FINAL CONSTRUCTION' IS ACHIEVED.
- IT IS THE RESPONSIBILITY OF THE INSTALLING CONTRACTOR TO ENSURE THAT PROPER/ADEQUATE EQUIPMENT IS USED TO SET/INSTALL THE MODULES.
- STORMTRAP MODULES SHALL BE PLACED ON A LEVEL, 6" FOUNDATION OF ¾" AGGREGATE EXTENDING 2'-0" PAST THE OUTSIDE OF THE SYSTEM (SEE DETAIL 1) AND SHALL BE PLACED ON PROPERLY COMPACTED SOILS (SEE SHEET 1.1 FOR SOIL BEARING CAPACITY REQUIREMENTS), AND IN ACCORDANCE WITH ASTM C891 STANDARD PRACTICE FOR INSTALLATION OF UNDERGROUND PRECAST UTILITY STRUCTURES.
- THE STORMTRAP MODULES SHALL BE PLACED SUCH THAT THE MAXIMUM SPACE BETWEEN ADJACENT MODULES DOES NOT EXCEED ¾" (SEE DETAIL 2). IF THE SPACE EXCEEDS ¾", THE MODULES SHALL BE RESET WITH APPROPRIATE ADJUSTMENT MADE TO LINE AND GRADE TO BRING THE SPACE INTO SPECIFICATION.
- STORMTRAP MODULES ARE NOT WATERTIGHT. IF A WATERTIGHT SOLUTION IS REQUIRED, CONTACT STORMTRAP FOR RECOMMENDATIONS. THE WATERTIGHT APPLICATION IS TO BE PROVIDED AND IMPLEMENTED BY THE CONTRACTOR. THE CONTRACTOR IS RESPONSIBLE TO ENSURE THAT THE SELECTED WATERTIGHT SOLUTION PERFORMS AS SPECIFIED BY THE MANUFACTURER.
- THE HORIZONTAL JOINT BETWEEN THE TOP AND BASE LEG CONNECTIONS OF ALL PERIMETER STORMTRAP MODULES SHALL BE SEALED WITH PREFORMED MASTIC JOINT TAPE ACCORDING TO ASTM C891, 8.8 AND 8.12. (SEE DETAIL 3). THE MASTIC JOINT TAPE DOES NOT PROVIDE A WATERTIGHT SEAL.
- ALL EXTERIOR ROOF AND EXTERIOR VERTICAL WALL JOINTS BETWEEN ADJACENT STORMTRAP MODULES SHALL BE SEALED WITH 8" WIDE PRE-FORMED, COLD-APPLIED, SELF-ADHERING ELASTOMERIC RESIN, BONDED TO A WOVEN, HIGHLY PUNCTURE RESISTANT POLYMER WRAP, CONFORMING TO ASTM C891 AND SHALL BE INTEGRATED WITH PRIMER SEALANT AS APPROVED BY STORMTRAP (SEE DETAILS 2, 4, & 5). THE JOINT WRAP DOES NOT PROVIDE A WATERTIGHT SEAL. THE SOLE PURPOSE OF THE JOINT WRAP IS TO PROVIDE A SILT AND SOIL TIGHT SYSTEM. THE ADHESIVE EXTERIOR JOINT WRAP SHALL BE INSTALLED ACCORDING TO THE FOLLOWING INSTALLATION INSTRUCTIONS:
  - USE A BRUSH OR WET CLOTH TO THOROUGHLY CLEAN THE OUTSIDE SURFACE AT THE POINT WHERE JOINT WRAP IS TO BE APPLIED.
  - A RELEASE PAPER PROTECTS THE ADHESIVE SIDE OF THE JOINT WRAP. PLACE THE ADHESIVE TAPE (ADHESIVE SIDE DOWN) AROUND THE STRUCTURE, REMOVING THE RELEASE PAPER AS YOU GO. PRESS THE JOINT WRAP FIRMLY AGAINST THE STORMTRAP MODULE SURFACE WHEN APPLYING.
- IF THE CONTRACTOR NEEDS TO CANCEL ANY SHIPMENTS, THEY MUST DO SO 48 HOURS PRIOR TO THEIR SCHEDULED ARRIVAL AT THE JOB SITE. IF CANCELED AFTER THAT TIME, PLEASE CONTACT THE PROJECT MANAGER.
- IF THE STORMTRAP MODULE(S) IS DAMAGED IN ANY WAY PRIOR, DURING, OR AFTER INSTALL, STORMTRAP MUST BE CONTACTED IMMEDIATELY TO ASSESS THE DAMAGE AND TO DETERMINE WHETHER OR NOT THE MODULE(S) WILL NEED TO BE REPLACED. IF ANY MODULE ARRIVES AT THE JOBSITE DAMAGED DO NOT UNLOAD IT; CONTACT STORMTRAP IMMEDIATELY. ANY DAMAGE NOT REPORTED BEFORE THE TRUCK IS UNLOADED WILL BE THE CONTRACTOR'S RESPONSIBILITY.
- STORMTRAP MODULES CANNOT BE ALTERED IN ANY WAY AFTER MANUFACTURING WITHOUT WRITTEN CONSENT FROM STORMTRAP.



**StormTrap**  
 PATENTS LISTED AT: [HTTP://STORMTRAP.COM/PATENT/](http://stormtrap.com/patent/)  
 1287 WINDHAM PARKWAY  
 ROMEVILLE, IL 60446  
 P:815-941-4549 / F:331-318-5347

**ENGINEER INFORMATION:**

**PROJECT INFORMATION:**

**DOUBLETRAP  
INFILTRATION**

**CURRENT ISSUE DATE:**

**ISSUED FOR:**

**SAMPLE PROJECT**

| REV. | DATE: | ISSUED FOR: | DWN BY: |
|------|-------|-------------|---------|
|      |       |             |         |
|      |       |             |         |
|      |       |             |         |
|      |       |             |         |
|      |       |             |         |
|      |       |             |         |
|      |       |             |         |
|      |       |             |         |
|      |       |             |         |
|      |       |             |         |

**SCALE:**

**NTS**

**SHEET TITLE:**

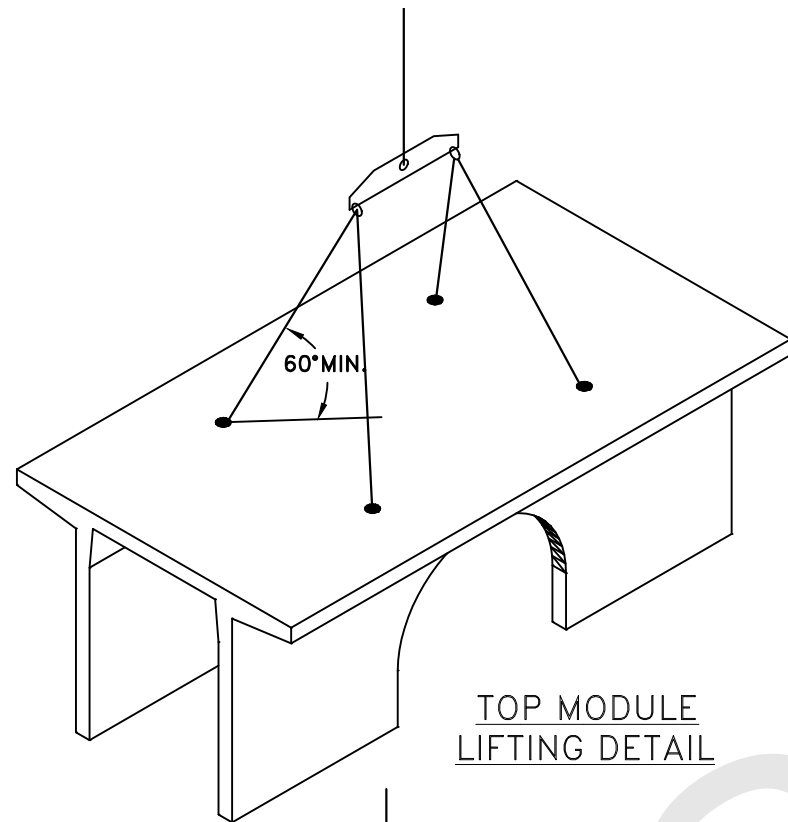
**DOUBLETRAP  
INSTALLATION  
SPECIFICATION**

**SHEET NUMBER:**

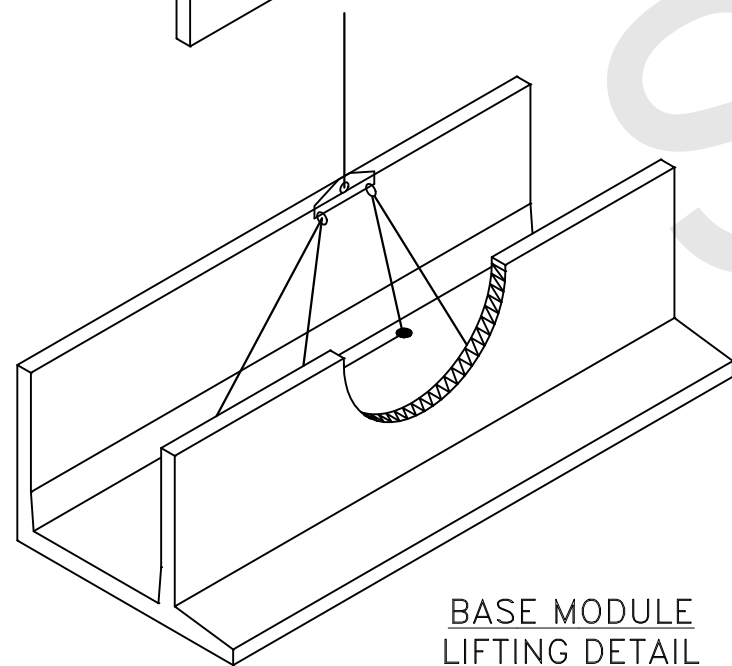
**3.0**

## STORMTRAP MODULE LIFTING SPECIFICATION

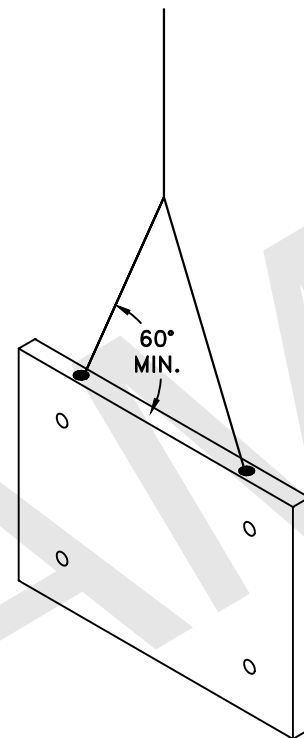
1. IT IS THE CONTRACTOR'S RESPONSIBILITY TO ENSURE THAT ALL (4) CHAINS/CABLES ARE SECURED PROPERLY TO THE LIFTING ANCHORS AND IN EQUAL TENSION WHEN LIFTING THE STORMTRAP MODULE.
2. MINIMUM 7'-0" CHAIN/CABLE LENGTH TO BE USED TO LIFT STORMTRAP MODULES (SUPPLIED BY CONTRACTOR).
3. CONTRACTOR TO ENSURE MINIMUM LIFTING ANGLE IS 60° FROM TOP SURFACE OF STORMTRAP MODULE. SEE DETAIL.
4. IT IS UNDERSTOOD AND AGREED THAT AT ALL TIMES DURING WHICH HOISTING AND RIGGING EQUIPMENT IS BEING SUPPLIED TO THE PURCHASER, OPERATOR OF SUCH EQUIPMENT SHALL BE IN CHARGE OF HIS ENTIRE EQUIPMENT AND SHALL AT ALL TIMES BE THE JUDGE OF THE SAFETY AND PROPERTY OF ANY SUGGESTION TO HIM FROM THE SELLER, ITS AGENTS OR EMPLOYEES. PURCHASER AGREES TO SAVE, INDEMNIFY AND HOLD HARMLESS SELLER FROM ALL LOSS, CLAIMS, DEMANDS OR CAUSES OF ACTION, WHICH MAY ARISE FROM THE EXISTENCE OR OPERATION OF SAID EQUIPMENT.



TOP MODULE  
LIFTING DETAIL



BASE MODULE  
LIFTING DETAIL



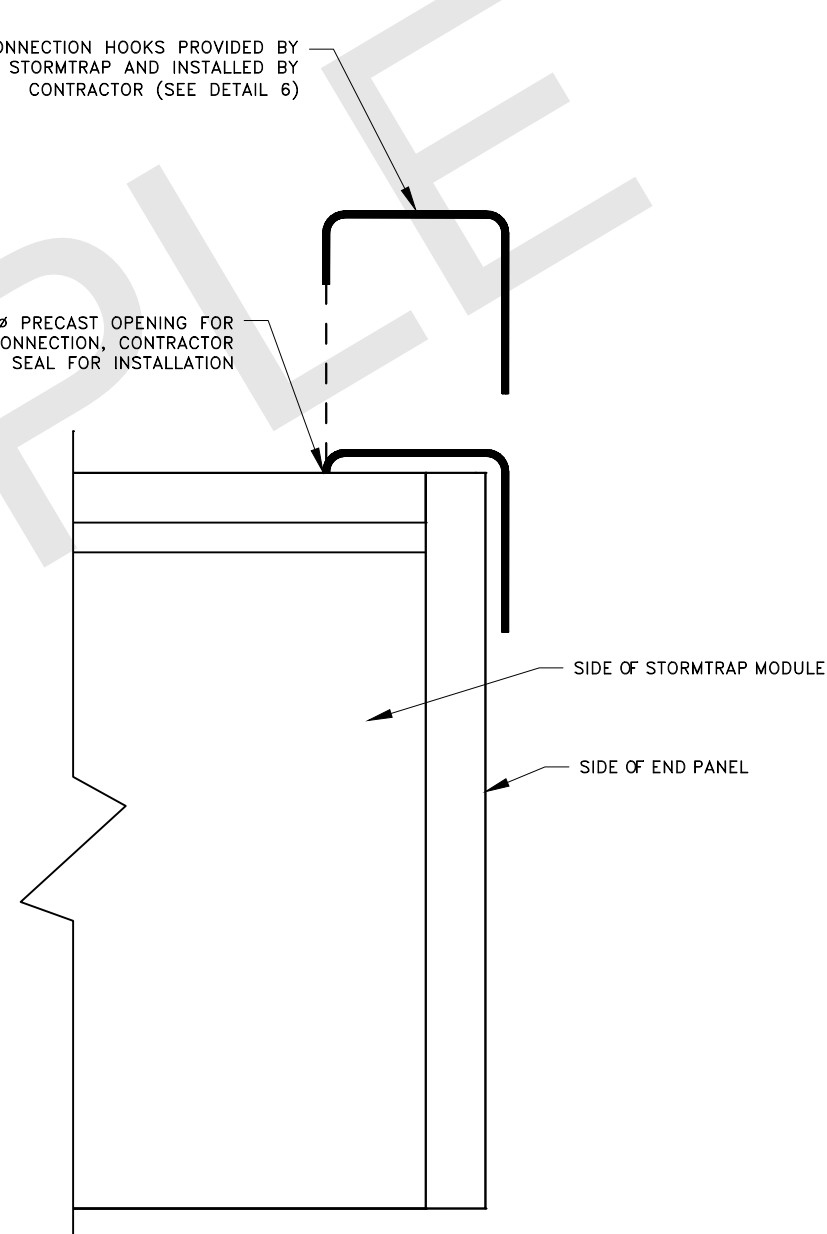
END PANEL  
LIFTING DETAIL

## END PANEL ERECTION/INSTALLATION SPECIFICATION

1. END PANELS WILL BE SUPPLIED TO CLOSE OFF OPEN ENDS OF ROWS.
2. PANELS SHALL BE INSTALLED IN A TILT UP FASHION DIRECTLY ADJACENT TO OPEN END OF MODULE (REFER TO SHEET 2.0 FOR END PANEL LOCATIONS). SIDE WITH LIFTERS INDICATES OUTSIDE FACE.
3. CONNECTION HOOKS WILL BE SUPPLIED WITH END PANELS TO SECURELY CONNECT PANEL TO ADJACENT STORMTRAP MODULE (SEE PANEL CONNECTION ELEVATION VIEW).
4. ONCE CONNECTION HOOK IS ATTACHED, LIFTING CLUTCHES MAY BE REMOVED.
5. JOINT WRAP SHALL BE PLACED AROUND PERIMETER JOINT PANEL (SEE SHEET 3.0).

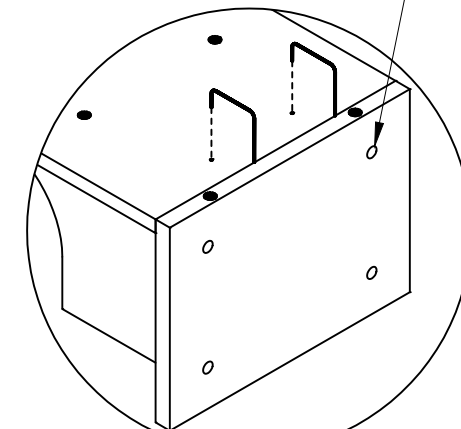
CONNECTION HOOKS PROVIDED BY  
STORMTRAP AND INSTALLED BY  
CONTRACTOR (SEE DETAIL 6)

1"  $\phi$  PRECAST OPENING FOR  
HOOK CONNECTION, CONTRACTOR  
TO SEAL FOR INSTALLATION

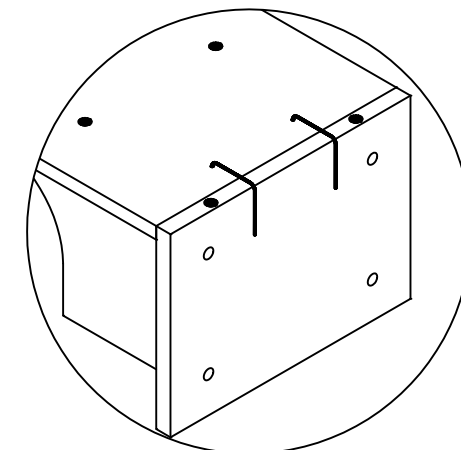


PANEL CONNECTION  
ELEVATION VIEW

LIFTERS INDICATE OUTSIDE  
FACE OF END PANEL



STEP 1



STEP 2

DETAIL 6

**StormTrap**

PATENTS LISTED AT: [HTTP://STORMTRAP.COM/PATENT/](http://stormtrap.com/patent/)

1287 WINDHAM PARKWAY  
ROMEONVILLE, IL 60446  
P:815-941-4549 / F:331-318-5347

### ENGINEER INFORMATION:

|  |
|--|
|  |
|--|

### PROJECT INFORMATION:

|                            |
|----------------------------|
| DOUBLETRAP<br>INFILTRATION |
|----------------------------|

### CURRENT ISSUE DATE:

|  |
|--|
|  |
|--|

### ISSUED FOR:

|                |
|----------------|
| SAMPLE PROJECT |
|----------------|

| REV. | DATE: | ISSUED FOR: | DWN BY: |
|------|-------|-------------|---------|
|      |       |             |         |
|      |       |             |         |
|      |       |             |         |
|      |       |             |         |
|      |       |             |         |
|      |       |             |         |
|      |       |             |         |
|      |       |             |         |

### SCALE:

|     |
|-----|
| NTS |
|-----|

### SHEET TITLE:

|   |
|---|
| DOUBLETRAP<br>INSTALLATION<br>SPECIFICATION |
|---|

### SHEET NUMBER:

|     |
|-----|
| 3.1 |
|-----|

**STORMTRAP ZONE INSTALLATION SPECIFICATION/PROCEDURE**

| ZONE CHART |                      |
|------------|----------------------|
| ZONES      | ZONE DESCRIPTIONS    |
| ZONE 1     | FOUNDATION AGGREGATE |
| ZONE 2     | BACKFILL             |
| ZONE 3     | FINAL COVER OVERTOP  |

1. THE FILL PLACED AROUND THE STORMTRAP MODULES MUST BE DEPOSITED ON BOTH SIDES AT THE SAME TIME AND TO APPROXIMATELY THE SAME ELEVATION. AT NO TIME SHALL THE FILL BEHIND ONE SIDE WALL BE MORE THAN 2'-0" HIGHER THAN THE FILL ON THE OPPOSITE SIDE. BACKFILL SHALL EITHER BE COMPACTED AND/OR VIBRATED TO ENSURE THAT BACKFILL AGGREGATE/STONE MATERIAL IS WELL SEATED AND PROPERLY INTER LOCKED. CARE SHALL BE TAKEN TO PREVENT ANY WEDGING ACTION AGAINST THE STRUCTURE, AND ALL SLOPES WITHIN THE AREA TO BE BACKFILLED MUST BE STEPPED OR SERRATED TO PREVENT WEDGING ACTION. CARE SHALL ALSO BE TAKEN AS NOT TO DISRUPT THE JOINT WRAP FROM THE JOINT DURING THE BACKFILL PROCESS. BACKFILL MUST BE FREE-DRAINING MATERIAL. SEE ZONE 2 BACKFILL CHART ON THIS PAGE FOR APPROVED BACKFILL OPTIONS. IF NATIVE EARTH IS SUSCEPTIBLE TO MIGRATION, CONFIRM WITH GEOTECHNICAL ENGINEER AND PROVIDE PROTECTION AS REQUIRED (PROVIDED BY OTHERS). ALL MODULES MUST BE SET AND ALL SIDES MUST BE FULLY BACKFILLED BEFORE TRAVEL OVERTOP THE SYSTEM IS PERMITTED. SEE NOTE 2 FOR EXCEPTIONS AND LIMITATIONS.
2. THE FILL PLACED OVERTOP THE SYSTEM SHALL BE PLACED IN MINIMUM 6" LIFTS. AT NO TIME SHALL MACHINERY OR VEHICLES GREATER THAN THE DESIGN LIVE LOAD LISTED ON SHEET 1.1 TRAVEL OVERTOP THE SYSTEM. IF TRAVEL OVER THE SYSTEM OCCURS BEFORE THE MINIMUM DESIGN COVER IS ACHIEVED, IT MAY BE NECESSARY TO REDUCE THE ULTIMATE LOAD/BURDEN OF THE OPERATING MACHINERY SO AS TO NOT EXCEED THE DESIGN CAPACITY OF THE SYSTEM. VEHICLES AND MACHINERY USED TO PLACE FILL MATERIAL ON TOP OF THE SYSTEM SHALL TRAVEL PARALLEL TO THE LONGITUDINAL AXIS OF THE STORMTRAP MODULES WHENEVER POSSIBLE.
3. THE VIBRATORY FUNCTION OF ANY ROLLER, COMPACTOR, VEHICLE, ETC. SHALL NOT BE USED OVERTOP THE SYSTEM WITHOUT PRIOR APPROVAL FROM STORMTRAP. IN SOME CASES, HAND COMPACTION MAY BE NECESSARY TO ENSURE THAT THE ALLOWABLE DESIGN LOADING IS NOT EXCEEDED.

**ENGINEER INFORMATION:**

**PROJECT INFORMATION:**

**DOUBLETRAP  
INFILTRATION**

**CURRENT ISSUE DATE:**

**ISSUED FOR:**

**SAMPLE PROJECT**

| REV. | DATE: | ISSUED FOR: | DWN BY: |
|------|-------|-------------|---------|
|      |       |             |         |
|      |       |             |         |
|      |       |             |         |
|      |       |             |         |
|      |       |             |         |
|      |       |             |         |
|      |       |             |         |
|      |       |             |         |
|      |       |             |         |
|      |       |             |         |

**SCALE:**

**NTS**

**SHEET TITLE:**

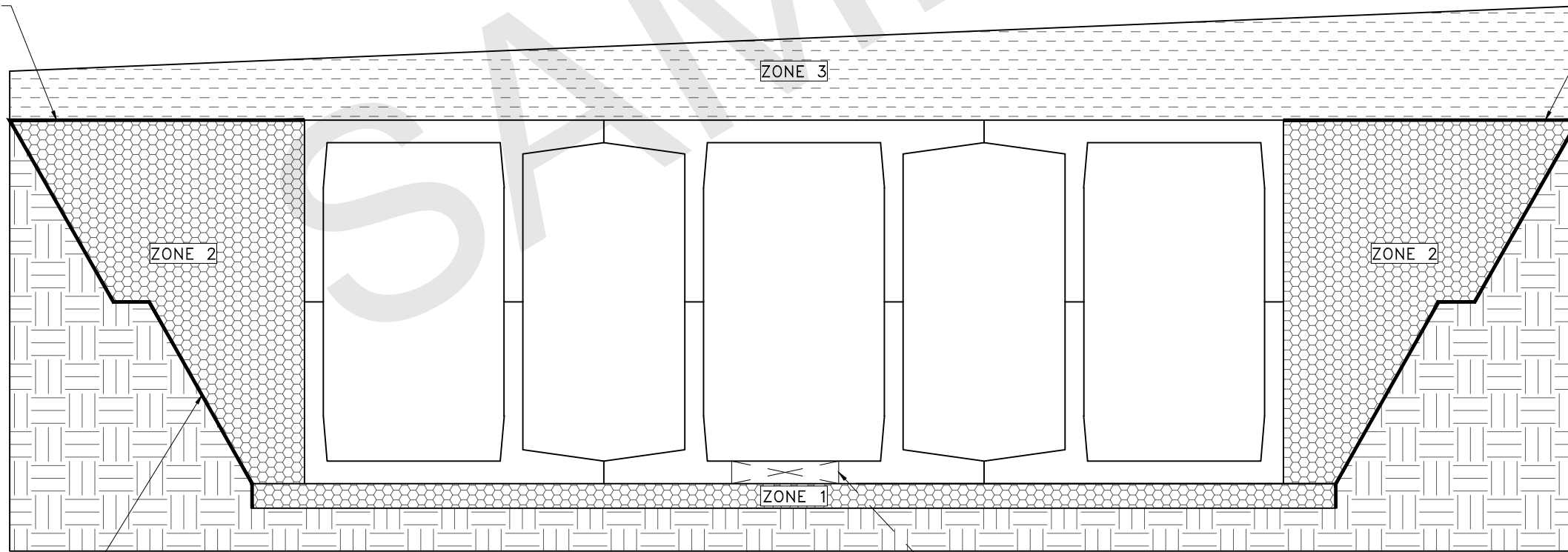
**DOUBLETRAP  
BACKFILL  
SPECIFICATION**

**SHEET NUMBER:**

**4.0**

GEOFABRIC/GEOTEXTILE AS REQUIRED PER APPROVED ZONE 2 BACKFILL OPTIONS.

GEOFABRIC/GEOTEXTILE AS REQUIRED PER APPROVED ZONE 2 BACKFILL OPTIONS.



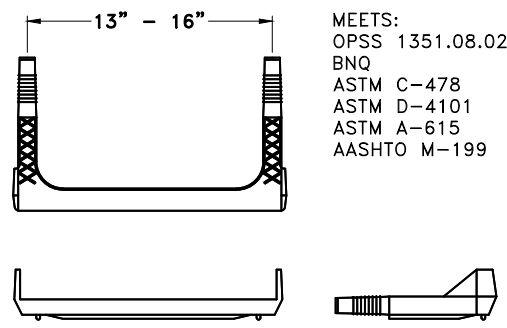
STEPPED OR SERRATED AND APPLICABLE OSHA REQUIREMENTS (SEE INSTALLATION SPECIFICATIONS)

**BACKFILL DETAIL**

INFILTRATION OPENINGS INTERIOR BASE UNITS ONLY

**ACCESS OPENING SPECIFICATION**

1. A TYPICAL ACCESS OPENING FOR THE STORMTRAP SYSTEM ARE 2'-0" IN DIAMETER. ACCESS OPENINGS LARGER THAN 4'-0" IN DIAMETER NEED TO BE APPROVED BY STORMTRAP. ALL OPENINGS MUST RETAIN AT LEAST 2'-0" OF CLEARANCE FROM THE END OF THE STORMTRAP MODULE UNLESS NOTED OTHERWISE. ALL ACCESS OPENINGS TO BE LOCATED ON INSIDE LEG UNLESS OTHERWISE SPECIFIED. SEE SHEET 2.0 FOR SIZES AND LOCATIONS.
2. UNLESS OTHERWISE SPECIFIED, PLASTIC COATED STEPS ARE PROVIDED INSIDE ANY MODULE WHERE DEEMED NECESSARY. THE HIGHEST STEP IN THE MODULE IS TO BE PLACED A DISTANCE OF 1'-0" FROM THE INSIDE EDGE OF THE STORMTRAP MODULES. ALL ENSUING STEPS SHALL BE PLACED AT A DISTANCE BETWEEN 10" MIN AND 14" MAX BETWEEN THEM. STEPS MAY BE MOVED OR ALTERED TO AVOID OPENINGS OR OTHER IRREGULARITIES IN THE MODULE.
3. STORMTRAP LIFTING INSERTS MAY BE RELOCATED TO AVOID INTERFERENCE WITH ACCESS OPENINGS OR THE CENTER OF GRAVITY OF THE MODULE AS NEEDED.
4. STORMTRAP ACCESS OPENINGS MAY BE RELOCATED TO AVOID INTERFERENCE WITH INLET AND/OR OUTLET PIPE OPENINGS SO PLACEMENT OF STEPS IS ATTAINABLE.
5. ACCESS OPENINGS SHOULD BE LOCATED IN ORDER TO MEET THE APPROPRIATE MUNICIPAL REQUIREMENTS. STORMTRAP RECOMMENDS AT LEAST TWO ACCESS OPENINGS PER SYSTEM FOR ACCESS AND INSPECTION.
6. USE PRECAST ADJUSTING RINGS AS NEEDED TO MEET GRADE. STORMTRAP RECOMMENDS FOR COVER OVER 2' TO USE PRECAST BARREL OR CONE SECTIONS. (PROVIDED BY OTHERS)



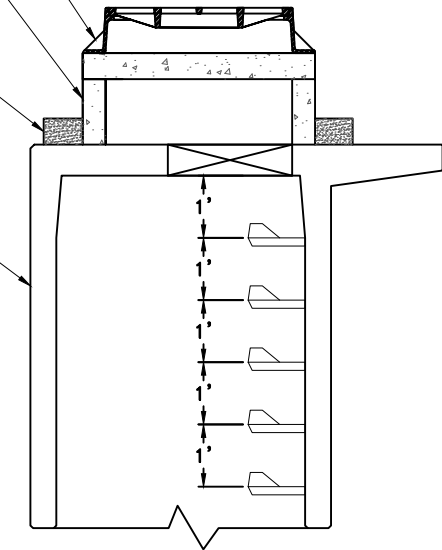
**STEP DETAIL**

MEETS:  
 OPSS 1351.08.02  
 BNQ  
 ASTM C-478  
 ASTM D-4101  
 ASTM A-615  
 AASHTO M-199

FRAME & COVER AS SPECIFIED BY ENGINEER (SUPPLIED BY OTHERS)  
 PRECAST CONCRETE ADJUSTING RINGS, BARREL OR CONE SECTIONS AS NEEDED SEE ACCESS OPENING SPECIFICATION NOTE 6. (SUPPLIED BY OTHERS)

NON-SHRINK GROUT

STORMTRAP MODULE



**RISER/STAIR DETAIL**

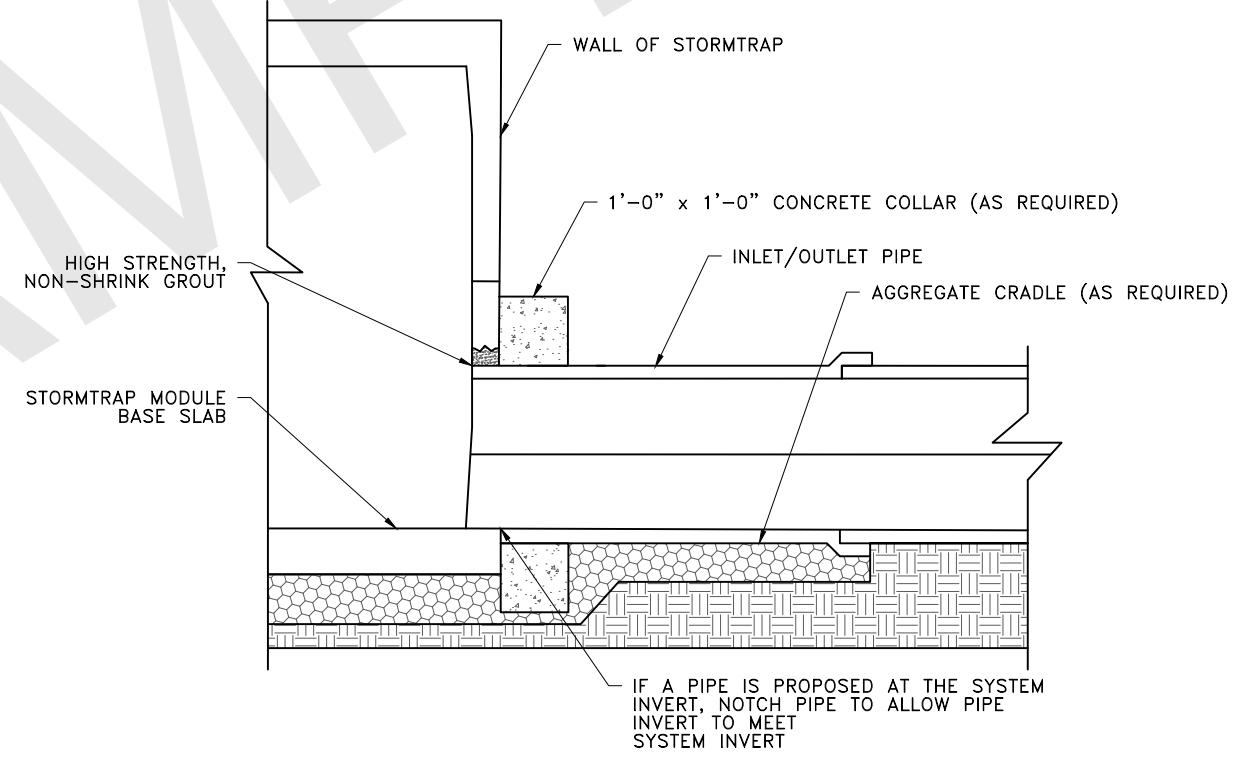
**PIPE OPENING SPECIFICATION**

1. MINIMUM EDGE DISTANCE FOR AN OPENING ON THE OUTSIDE WALL SHALL BE NO LESS THAN 1'-0".
2. CONNECTING PIPES MAY BE INSTALLED WITH A 1'-0" CONCRETE COLLAR AND AN AGGREGATE CRADLE (AS REQUIRED) FOR AT LEAST ONE PIPE LENGTH (SEE PIPE CONNECTION DETAIL). A STRUCTURAL GRADE CONCRETE OR HIGH STRENGTH, NON-SHRINK GROUT WITH A MINIMUM 28 DAY COMPRESSIVE STRENGTH OF 3000 PSI MAY BE USED.
3. THE ANNULAR SPACE BETWEEN THE PIPE AND THE HOLE SHALL BE FILLED WITH HIGH STRENGTH NON-SHRINK GROUT.

**PIPE INSTALLATION INSTRUCTIONS**

1. CLEAN AND LIGHTLY LUBRICATE ALL OF THE PIPE TO BE INSERTED INTO STORMTRAP.
2. IF PIPE IS CUT, CARE SHOULD BE TAKEN TO ALLOW NO SHARP EDGES. BEVEL AND LUBRICATE LEAD END OF PIPE.
3. ALIGN CENTER OF PIPE TO CORRECT ELEVATION AND INSERT INTO OPENING.

NOTE: ALL ANCILLARY PRODUCTS/SPECIFICATIONS RECOMMENDED AND SHOWN ON THIS SHEET INCLUDING BUT NOT LIMITED TO CONCRETE COLLARS, AGGREGATE CRADLES, GRADE RINGS, RISER SECTIONS, ETC., ARE RECOMMENDATIONS ONLY AND SUBJECT TO CHANGE PER THE INSTALLING CONTRACTOR AND/OR PER LOCAL MUNICIPAL CODE/REQUIREMENTS.



**NOTCHED PIPE CONNECTION DETAIL WHEN PIPE INVERT IS AT INVERT OF STORMTRAP SYSTEM**

**StormTrap**  
 PATENTS LISTED AT: [HTTP://STORMTRAP.COM/PATENT]  
 1287 WINDHAM PARKWAY  
 ROMEVILLE, IL 60446  
 P:815-941-4549 / F:331-318-5347

**ENGINEER INFORMATION:**

**PROJECT INFORMATION:**

**DOUBLETRAP INFILTRATION**

**CURRENT ISSUE DATE:**

**ISSUED FOR:**

**SAMPLE PROJECT**

| REV. | DATE: | ISSUED FOR: | DWN BY: |
|------|-------|-------------|---------|
|      |       |             |         |
|      |       |             |         |
|      |       |             |         |
|      |       |             |         |
|      |       |             |         |
|      |       |             |         |
|      |       |             |         |
|      |       |             |         |

**SCALE:**

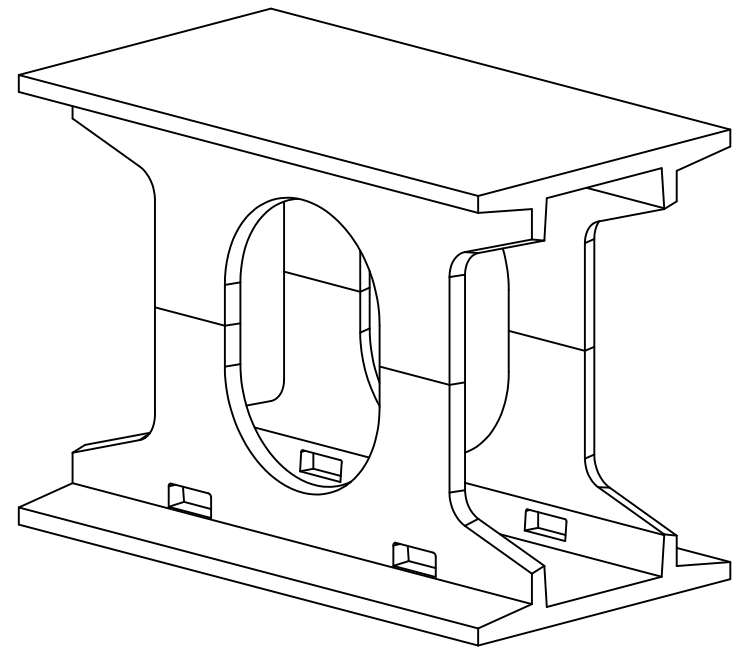
**NTS**

**SHEET TITLE:**

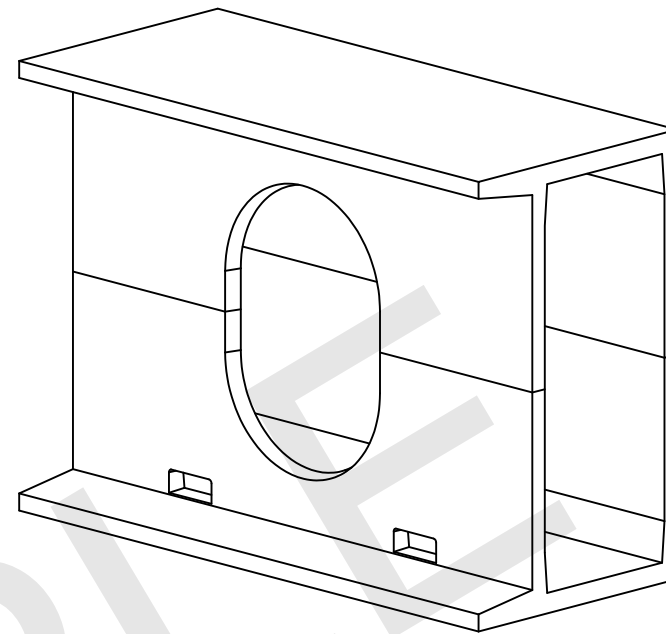
**PIPE / ACCESS OPENING SPECIFICATION**

**SHEET NUMBER:**

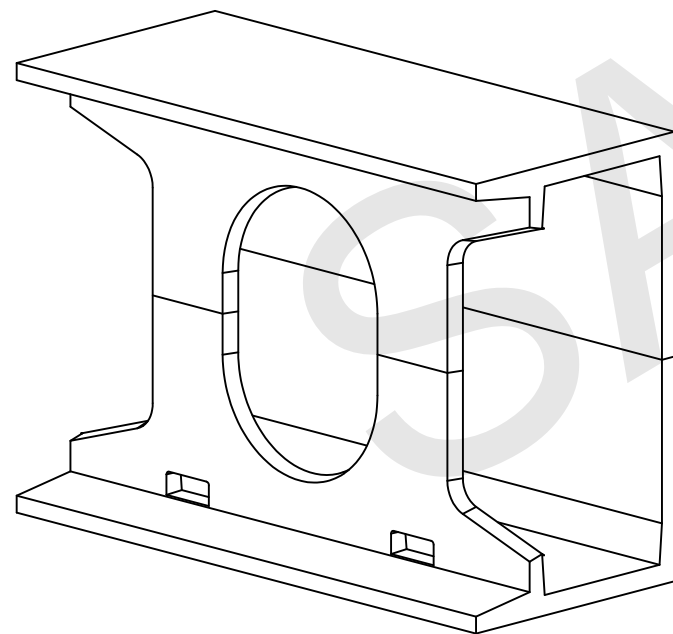
**5.0**



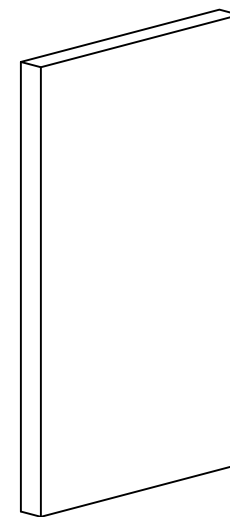
TYPE I/INF



TYPE IV



TYPE III



TYPE IV END PANEL

ENGINEER INFORMATION:

PROJECT INFORMATION:

DOUBLETRAP  
INFILTRATION

CURRENT ISSUE DATE:

ISSUED FOR:

SAMPLE PROJECT

| REV. | DATE: | ISSUED FOR: | DWN BY: |
|------|-------|-------------|---------|
|      |       |             |         |
|      |       |             |         |
|      |       |             |         |
|      |       |             |         |
|      |       |             |         |
|      |       |             |         |
|      |       |             |         |
|      |       |             |         |

SCALE:

NTS

SHEET TITLE:

DOUBLETRAP  
MODULE TYPES

SHEET NUMBER:

6.0

- NOTES:**
1. OPENING LOCATIONS AND SHAPES MAY VARY.
  2. SP - INDICATES A MODULE WITH MODIFICATIONS.
  3. P - INDICATES A MODULE WITH A PANEL ATTACHMENT.
  4. POCKET WINDOW OPENINGS ARE OPTIONAL.